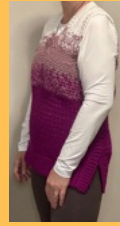


Crochet Pattern



Prepared by:
LJGP

Free Ravelry
Download

brandewire.ca/hooked
© 2024

Versatile Long Vest with Optional Sides

Materials

Hooks 3.5 and 4 mm or 5 mm

Yarn Super Fine 1
3.5 oz / 100 g
240 yards

Scissors
Needle

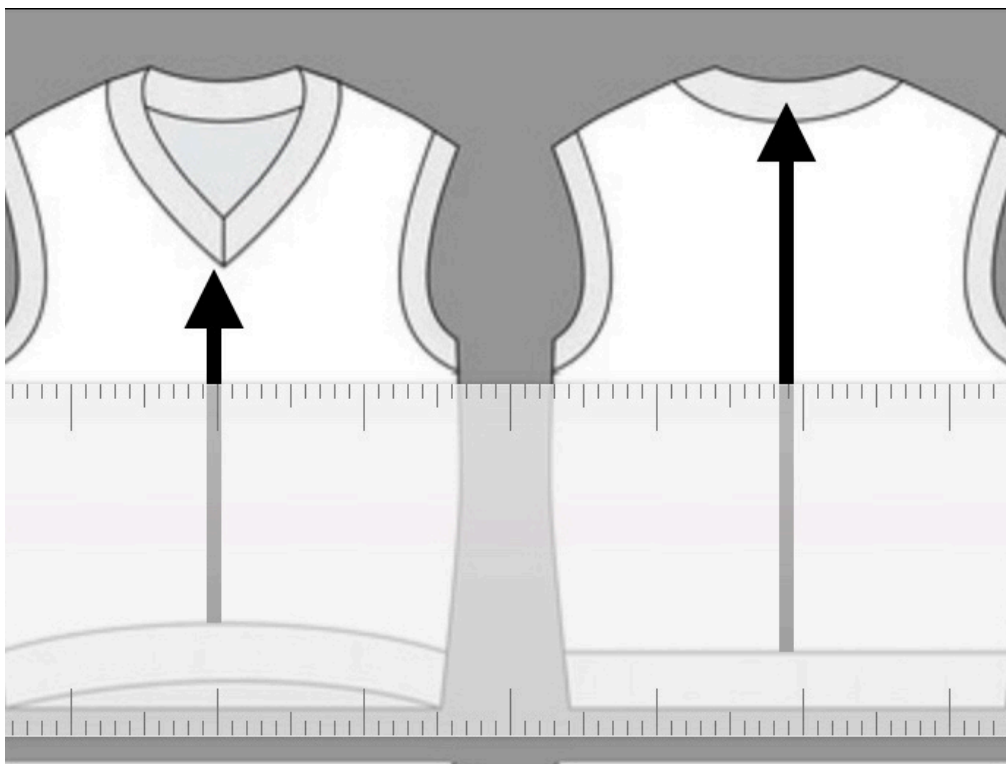
Pattern shows Tailor Essential Super Fine (1) Bamboo Yarn, Steel Blue Colour (100% Rayon Bamboo) and a newer version using Loops and Threads Soft Classic Medium Acrylic (4) version in Raspberry, White and Mauve. This new version is in response to many questions about yarn options like doubling up on a finer yarn. We also tried to simplify the information on potential design options and to provide clearer photo's / instructions with the newer, larger yarn for beginners. Thanks for all your feedback.

Hand wash. Bamboo gauge 27 st/ 29 rows in 4x4 square. Stated yarn lengths are for guidance only. I used 4+ bundles (each approx. 219 m / 240 yds) or approx. 1100 yds. for this vest, but the amount can vary depending on colour changes and trim options. The heavier acrylic yarn option for example has a significantly different stitch count as it is a medium (4) yarn of one raspberry bundle of 354 yards plus leftovers/stash. The key to a specific size is a lot about the yarn and crochet style/hands/skills and the size of hook.

This pattern is for ladies medium, approx.38-39" / 96-100cm bust-line and 25" / 63.5cm in length, 21" / 53 cm in width across waistline/ Hips. This length was mid thigh so I could wear with leggings - but the overall length is easily adjusted to shorten the vest or if you have a shorter/longer torso. This also has long / open armholes so if you want to wear without shirts you definitely will want to shorten the armhole. Using such a fine bamboo yarn I am able to layer the vest so you may also want to measure to match the length of a jacket you would wear overtop or narrow the armhole trim if your jacket has tighter sleeves.

This pattern can easily be adjusted for fit and there are notes in the pattern for where to check your measurements / fit. For example, measure the total back length you desire for your finished

vest - but also take into account your measurements for below and above the arm hole as depending on a short or longer torso you can add length below or above. Keep in mind lengthening or shortening the top half affects the length of the armhole and neckline.



This pattern will also enable lots colour blocking options.

As a left-handed hook we recommend @[theWobbles](#) YouTube tutorials for beginners

Abbreviations and Definitions

Abbreviations	Definition
sc	Single crochet stitch,
st	Stitch
LinSt	Linen stitch
Scbl	Single Crochet back loop only (Rib)
ss	Slip stitch
Ch	Chain stitch
LinSt2Tog	Decrease (crochet 2 st. together)
(##)	At the end of a line indicates the total number of stitches
[#]	Notes number of stitches that vary for repeats

Bottom Hems - Front and Back

Row Creating the ribbed hems

- 1 If you like the wider look of the hem in our photos Ch. 13 using a 3.5 hook
Row 1: single crochet (sc) in 2nd chain and then continue to sc in each chain across, ch 1 turn (12). All the photo's show this wider hem trim.
- As you review the full pattern before you begin a note to consider - thinner bamboo yarns are much softer / less stiff even if you double them vs the alternative acrylic / stiffer yarn now shown.
- Blue soft bamboo (fine 1)= Ch.13 and crochet to 21"
- At each stage we will note how to adapt the pattern if you prefer to double up or use a heavier weight yarn. This newer acrylic example / version also shows how to adapt for an open hem at the bottom vs the original blue version above which has the entire side sewn together at assembly.
- Raspberry stiffer acrylic (medium 4) = Ch.13 and crochet to 18" as you will have side trim. Shown in solid raspberry but this also can be done using different colours/blocks.



- 2 Scbl only in each stitch across to create the ribbing, ch.1, turn



Continue to Scbl in each st to complete the hem at 158 rows or 21" / 53 cm. Ch.1, turn.

Hem measures approx. 21" when slightly stretched out and before beginning to work upwards into the back. When I tested the pattern, depending on my gauge and yard / stretch, 21" was approximately 77-79 ribs / 154-158 rows.

You will need two hems for the front and back. Check fit / width.

Blue Bamboo: create a 21" hem.

Raspberry Acrylic: 18" as we will add a side trim as we assemble the vest and partially leave the sides open.

3

Larger hips than bustline? - see the fit adjustment notes at the end.



Back & Front Body

Linen stitch (also called a Moss stitch) is a sc + chain in every second stitch. To begin, LinSt into the first loop of the hem and secure the ends. As the yarn I used is so fine, I only did a LinSt in each rib across the rest of the hem to end up with 80 st. Ch1. turn.

Note: if you are counting across the top of your row (loops) vs. each looking at the front of each stitch (e.g. “v” shown in the next section below) you will see that the LinSt (sc+ch) appears like two loops so take care when counting. (Eg. 80 st will be 160 loops).



1

Raspberry Acrylic: 18” = 34 LinSt.



Photo: First row LinSt in every rib

2

Switch to larger 4 hook

Ch.1, then continue to LinSt in every 2nd loop across the row, turn.

With finer yarn it can be helpful to look for the “v” as you continue rows - refer to the photo below to see the “v” you create - insert your hook in between these “v’s” as shown on many YouTube tutorials for the linen stitch.



Row 3 to 92 - chain 1 and LinST across, turn.

Depending on your preferred length (I chose 15" / 38.5 cm from underarm to hem) you can increase / decrease so ensure you check the length / fit here - eg from bottom of armhole to bottom hem. To increase length for example for a much longer torso add rows.



3 - 92

Raspberry Acrylic: due to the larger yarn / different hook / different gauge 15" was approx. row 36 or 37 vs 92.

Decreasing for the armhole

Row 93 - slip stitch the first 13 st. (26 loops), ch 1, then LinSt in the same stitch and continue to LinSt across - stopping to leave the last 13 stitches unworked - chain 1 and turn.

13-54-13 unworked = (80 st)

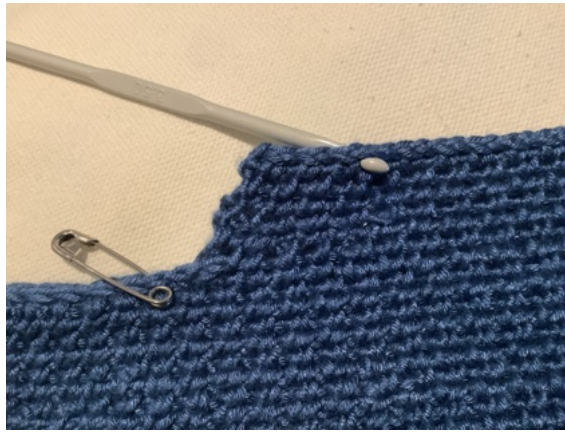
Row 94 - decrease by LinSt2Tog the first two st together - then LinSt across row until 2 sts remain, then decrease again by LinSt2Tog the last two st together, ch 1, turn

54-2=(52 st)

Row 95 - as we did for row 94 we want to decrease each side by merging two st and either end.[2]

52-2=(50 st.)

93-95



Raspberry Acrylic: SS 5 stitches (10 loops) LinSt across leaving the last 5 unworked. Ch. 1 turn.
 $5/24/5=34$ Continue with decreases and approx. 26 - 29 rows to finish the upper back - again depending on yarn, colours, gauge and hook size.



Finishing the back

Continue to create the top of the back by LinSt across the shorter span we have created and as before ch.1, turn at each end. I chose 10" / 26 cm which was 71 rows from the armhole decrease at row 93 (For a total length of 25") but again you can easily increase / decrease to the desired fit. Fasten off.

95-167



Adapting fit note: if you make the upper body portion shorter this will also create a smaller armhole and shorten the neckline.

Row Step-by-Step - Front Body

1 Like the back (using 3.5 hook) we want to begin the front panel by working a LinSt into the end of each of the 80 st. ribbing row, ch.1, turn.

2-92 Switch to 4 hook. To match the bottom half of the back panel, continue to LinSt. Into each stitch across, ch.1, turn.

Armhole Reduction

93-95 Row 92: slip stitch (sl st) first 13 sts, ch 1, LinSt in same st, LinSt in each st across leaving last 13 unworked, ch 1, turn.

$$13 + 54 + 13 = (80)$$

Row 93: decrease by LinSt2Tog the first two st together, then LinSt across until 2 sts remain and decrease LinSt2Tog again, ch 1, turn.

$$54 - 2 = (52)$$

Row 94: repeat row 93 by decreasing at each end [2], ch 1, turn

$$52 - 2 = (50)$$

LEFT SIDE FRONT

Row 95: LinSt for 25 sts, ch 1, turn.

Row 96: decrease by LinSt2Tog first two sts together, LinSt remaining, ch 1, turn.(24)

Row 97: LinSt in each st across, ch 1, turn.(24)

Row 98: repeat row 96 to decrease [1]. (23)

Row 99: repeat row 97 (23).

Continue to repeat these last 2 rows until you have decreased from 23 to 10 sts.

Continue 10st across to complete 71 rows so the top of your front panel matches the 10" top of your back panel unless you have shortened to adapt your fit. You can also check the depth of the neckline here, but remember you will be adding a trim piece.

Fasten off leaving a long tail.

95-167



Raspberry Acrylic: As noted on the back, SS 5 stitches (10 loops) LinSt across leaving the last 5 unworked. Ch. 1 turn. $5/24/5=34$ Continue with decreases and approx. 26 - 29 rows, again depending on yarn, colours, gauge and hook size. After doing the two armhole decrease rows, you will continue the fronts with 10 rows stitches on either side, reducing each side to 6 stitches or approx. 3". Continue to approx. row 64/10" for the top half or desired length to match the back.



RIGHT SIDE FRONT

Attach yarn into the next available st (just beside the left side you just completed) with a simple knot.

Row 1: ch 1, LinSt 25 sts, ch 1, turn.

Row 2: LinSt each st until 2 remain, the decrease the last two stitches by LinSt2Tog together, ch 1, turn. [1]

$25-1=(24)$

Row 3: LinSt in each st across, ch 1, turn.

As you did for the left front, continue to repeat these last 2 rows until 10 sts remain....continue LinSt 10 across to reach 71 rows for top half of the right side to match the left.

Fasten off leaving a long tail.

95-167 R

ASSEMBLY

Lay the front panel directly on top of the back panel. Using your yarn needle and tail ends, seam across both shoulders connecting the two pieces together. For all the trim

I used a whipstitch. Check the overall length / fit as you drape it over your shoulders. Also consider the width you might prefer to finish off the neckline and arm holes. Then sew the sides together from below the armhole to the lower hem for this version (Bamboo blue body).

Raspberry Acrylic: For the open sides option we will crochet additional ribbing trim pieces. As we decreased the hem width by 3", crochet two 1.5" ribbing (Ch.7) side trim pieces for both front and back. Join the side trims from under the arm to the waist. - leaving it open at the sides from the waist (or desired spot) down to the hem.



NECKBAND

As we did for the hems if you want the same width Ch 13 for the wider trim. (Blue)

Row 1: sc in 2nd ch from hook, sc in each ch across, ch 1, turn. (12).

Row 2: SCBL in each st across, ch 1, turn. (12)

Rep row 2 until the neckband is long enough to go around the neckline when slightly stretched. Important as if you don't slightly stretch the ribbing when measuring you will have made it too long. I found it easier to not tie off the end until I had attached all the trim pieces so I could make absolutely sure they were the correct length.

Fasten off leaving a long tail you will use to attach the piece.

Always attach your trim with the rights sides facing out. I find it easiest to lay the piece flat on a table to assemble. Sew your neckline trim to the neckline. I used a whipstitch.

To create a "v" to finish off the neckline you now turn your sweater inside out.



Once you have sewn the neckband all the way around the neckline you will finish the "v" next by folding back both the beginning and end of the band on the inside of the sweater (forms triangles) and sew these two parts together so the final seam in the "V" is centered.

Raspberry Acrylic thinner neckline trim example e.g. Ch.8



ARMHOLE

ARMHOLE TRIM. As noted at the beginning, for the Bamboo blue version I decided to match the neckline to the wider hem trim ribbing for balance (3.5 hook, ch.13...). You can easily adapt to make a thinner neckline / armhole trim to suit your yarn / preference (see Raspberry version ch.6). Again, if you are nervous about the stretch / fit do not tie off your ribbing until you have attached the trim around the armhole to ensure a perfect fit. With the wider trim, do stretch as it can end up “floppy” if you make a longer than needed trim.





SIDE PANEL OPTIONS / FIT NOTES

I wanted to be able to adapt this basic pattern for family and friends who are also a ladies medium, but have different body shapes/sizes. You can:

- Create a hem wider than 21" and then decrease / narrow in at the waist by LinSt2tog.

To Narrow Waist: measure where you waist will be and then eg. at row 20 add a marker at 10 stitches in and LinSt2Tog to decrease, then continue across until you are 12 stitches from the end and LinSt2Tog, add a marker and continue to the end, Ch.1 turn.

Repeat this for another row (Decrease 4). Then continue for 20 rows with this narrower waist section and then make matching increases to return to the original width and continue to the underarm.

Note: Raspberry due to larger yarn/hook/guage may be approx. row 8 and 10 and stitch 4 or 5 to decrease [-4].



If you are faced with a much wider bottom half for over the hips and waist vs the bust, you can also add in a side panel that will run from underneath the arm to the hem. See our Raspberry Acrylic example below. We matched the Bamboo blue sizing in the instructions above by decreasing the front and back panels by 3" (from 21" to 18") and then added back in the 3" with side trim panels.

I however discovered an issue when making this for someone I couldn't check fit on - it was slightly too wide at the end when she tried it on - so a quick fix was to use one full piece of trim on the front and and one short on the back. This allowed me to just use one narrow piece of trim from the waist up.

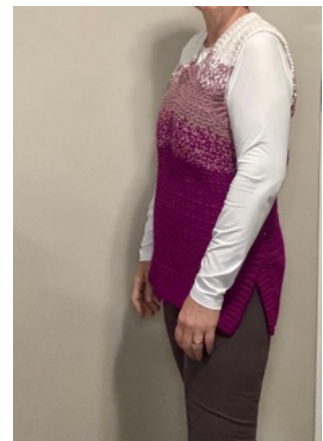


- Can I add a side panel where ribbing matches the direction of the hem ?

Yes! However, please note if you need a lot of width (e.g. 3") adding a panel to the Blue Bamboo 21" version will make the armholes in your upper half too large and you will have to make further alterations to your pattern to reduce the size of the armhole. (e.g. the pattern calls for slip stitch 13 to begin the armhole). We did find a test with just a narrow strip worked fine and also enabled a potential strip for colour blocking.

Ch.81 for a panel that matches rib direction.

Row 1: single crochet (sc) in 2nd chain and then continue to sc in each chain across, ch 1 turn (80). Continue the ribbing until you create for example a 1/4" wide panel.



Don't forget to "block" your final piece to shape it.

Great gift ideas

Not to be reproduced or
distributed

Free pattern for home
crafters

*so
Grateful
for Your
Support!*