

Crochet Pattern



Prepared by:
LJGP

Free Ravelry
Download

brandewire.ca/crochet
© 2024

Versatile Long Vest with Optional Sides

Materials

Hooks 3.5 and 4 mm

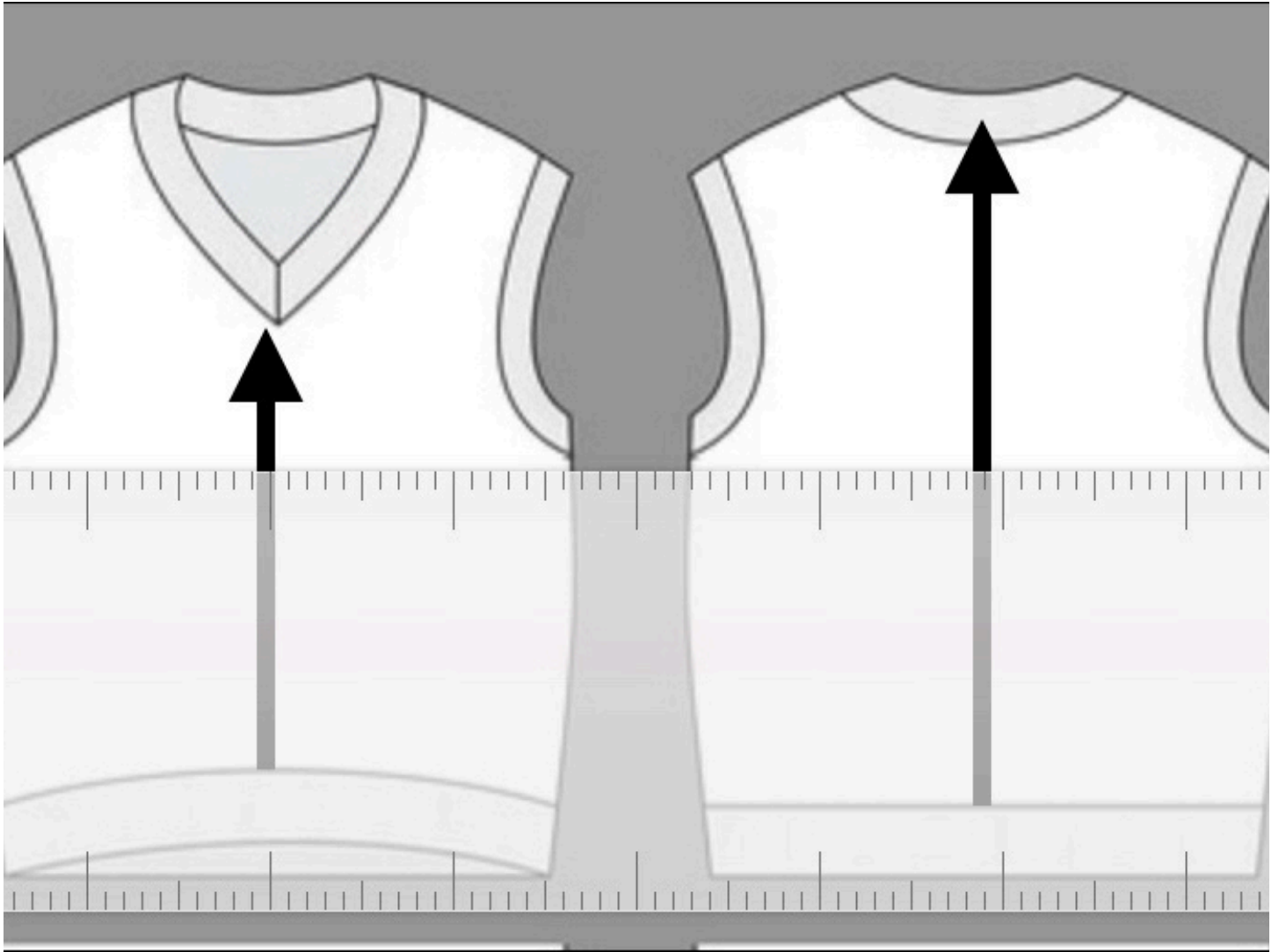
Yarn Super Fine 1
3.5 oz / 100 g
240 yards

Scissors
Needle

Pattern shows Tailor Essential Bamboo Yarn, Steel Blue Colour. 100% Rayon Bamboo. Hand wash. Gauge 27 st/ 29 rows in 4x4 square. Stated yarn lengths are for guidance only. I used 4+ bundles (each approx. 219 m / 240 yds) or approx. 1100 yds. for this vest, but the amount can vary depending on colour changes and trim options. The key to crochet a specific size is a lot about the yarn and crochet style/hands/skills, rather than the size of hook. Therefore, we recommend a range of hook sizes.

This pattern is for ladies medium, approx.38-39" / 96-100cm bust-line and 25" / 63.5cm in length, 21" / 53 cm in width across waistline/ Hips. This length was mid thigh so I could wear with leggings - but the overall length is easily adjusted to shorten the vest or if you have a shorter/longer torso. This also has long / open armholes so if you want to wear without shirts you definitely will want to shorten the armhole. Using such a fine yarn I am able to layer the vest so you may also want to measure to match the length of a jacket you would wear ovetop and consider a thinner, elegant trim so there is no bulk around the armholes.

This pattern can easily be adjusted for fit and there are notes in the pattern for where to check your measurements / fit. For example, measure the total back length you desire for your finished vest - but also take into account your measurements for below and above the arm hole as depending on a short or longer torso you can add length below or above. Keep in mind lengthening or shortening the top half affects the length of the armhole and neckline.



This pattern will also enable lots of colour blocking options. You can create the trim in another or multiple colours, or even add a smaller stripe within a 1/2"-1" side panel.

As a left-handed hook we recommend @[theWobbles](#) YouTube tutorials for beginners

Abbreviations and Definitions

Abbreviations	Definition
sc	Single crochet stitch,
st	Stitch
LinSt	Linen stitch
Scbl	Single Crochet back loop only (Rib)
ss	Slip stitch
Ch	Chain stitch
LinSt2Tog +1	Decrease (crochet 2 st. together) + chain 1
(##)	At the end of a line indicates the total number of stitches
[#]	Notes number of stitches that vary for repeats

Bottom Hems - Front and Back

Row Creating the ribbed hems

1

If you like the wider look of the, hem in our photos Ch. 13 using a 3.5 hook

Row 1: single crochet (sc) in 2nd chain and then continue to sc in each chain across, ch 1 turn (12). All the photo's show this wider trim.

As you review the full pattern before you begin a note to consider - As thinner bamboo yarns are less stiff, you can also opt for a thinner /elegant trim that isn't as wide as it won't have a tendency to be "floppy" by Ch.9 using a 3.5 hook (8) or switching to a very narrow around armholes e.g. Ch.6 (5). In particular I recommend narrower than shown for the armholes for a more elegant finish / better fit if wearing under a fitted suit jacket.



Shown: example of wider trim with matching side panel.

2

Scbl only in each stitch across to create the ribbing, ch.1, turn



Shown: examples of wider or thinner trims and colours

Continue to Scbl in each st to complete the hem at 158 rows or 21" / 53 cm. Ch.1, turn.

Hem measures approx. 21" when slightly stretched out and before beginning to work upwards into the back. When I tested the pattern, depending on my gauge and yard / stretch, 21" was approximately 77-79 ribs (2 rows per rib) means depending on your gauge you should have 154-158 rows.

You will need two hems for the front and back.

This is the easiest option to create a 21" from and back hem where you will sew the sides together to make a solid coloured body.

Colour Options: I wanted to design a vest with pieces that optimized my options for colour blocking. You can refer to my other versions where I adapted for a much chunkier yarn and different colours for hems.

3

Larger hips than bustline? - see the notes at the end. As I adapt the pattern for family and friends I also wanted to make it easy to not only add colour blocks, but to enable me to adapt the width of this bottom hem to account for when I wanted to add a side panel from under the arm to the hem. This allowed me to increase for wider waists or hips. You can also adjust the upper panel for bust size and necklines (e.g. a shorter or fewer rows for the “top” half of the panels will shorten armholes and necklines). To make wider vest on the bottom half only you can use e.g. a 1/4”-1/2” side panel or to increase the size overall you would need to increase the width of the initial bottom hems.



Back & Front Body

Row Step-by-Step - Back Body

1

Linen stitch (also called a Moss stitch) is a sc + chain in every second stitch. To begin, LinSt into the first loop of the hem and secure the ends. As the yarn I used is so fine, I then only did a LinSt in each rib across the rest of the hem to end up with 80 st. Ch1. turn.

You can also change colours as you begin to crochet the lower body.

Note: if you are counting across the top of your row (loops) vs. each stitch (e.g. “v” shown in the next section below) you will see that the LinSt (sc+ch) appears like two loops so take care when counting. (Eg. 80 st will be 160 loops).

If using different yarn or preferring to secure every rib and valley (row in between each rib) you can just LinSt2Tog so you end up with the same 80 st count to continue.



2

Switch to larger 4 hook

Ch.1, then LinSt in every 2nd loop across the row, turn.

With finer yarn it can be helpful to look for the “v” as you continue rows - refer to the photo below to see the “v” you create - insert your hook in between these “v’s” as shown on many YouTube tutorials for the linen stitch.



Row 3 to 92 - chain 1 and LinST across, turn.

Depending on your preferred length (I chose 15” / 38.5 cm from underarm to hem) you can increase / decrease so ensure you check the length / fit here - eg from bottom of armhole to bottom hem. To increase length for example for a much longer torso add rows.

3 - 92



Decreasing for the armhole

Row 93 - slip stitch the first 13 st. (26 loops), ch 1, then LinSt in the same stitch and continue to LinSt across - stopping to leave the last 13 stitches unworked - chain 1 and turn.

13-54-13 unworked = (80 st)

Row 94 - decrease by LinSt2Tog the first two st together - then LinSt across row until 2 sts remain, then decrease again by LinSt2Tog the last two st together, ch 1, turn

54-2=(52 st)

Row 95 - as we did for row 94 we want to decrease each side by merging two st and either end.[2]

52-2=(50 st.)



93-95

Finishing the back

Continue to create the top of the back by LinSt across the shorter span we have created and as before ch.1, turn at each end. I chose 10" / 26 cm which was 71 rows from the armhole decrease at row 93 (For a total length of 25") but again you can easily increase / decrease to the desired fit. Fasten off.

95-167



Row	Step-by-Step - Front Body
1	Like the back (using 3.5hook) we want to begin the front panel by working a LinSt into the end of each of the 80 st. ribbing row, ch.1, turn.
2-92	Switch to 4 hook. To match the bottom half of the back panel, continue to LinSt. Into each stitch across, ch.1, turn.
93-95	<p>Armhole Reduction</p> <p>Row 92: slip stitch (sl st) first 13 sts, ch 1, LinSt in same st, LinSt in each st across leaving last 13 unworked, ch 1, turn.</p> <p>$13 + 54 + 13 = (80)$</p> <p>Row 93: decrease by LinSt2Tog the first two st together, then LinSt across until 2 sts remain and decrease LinSt2Tog again, ch 1, turn.</p> <p>$54 - 2 = (52)$</p> <p>Row 94: repeat row 93 by decreasing at each end [2], ch 1, turn</p> <p>$52 - 2 = (50)$</p>
	<p>LEFT SIDE FRONT</p> <p>Row 95: LinSt for 25 sts, ch 1, turn.</p> <p>Row 96: decrease by LinSt2Tog first two sts together, LinSt remaining, ch 1, turn.(24)</p> <p>And Row 97: LinSt in each st across, ch 1, turn.(24)</p> <p>Row 98: repeat row 96 to decrease [1]. (23)</p> <p>Row 99: repeat row 97 (23).</p> <p>Continue to repeat these last 2 rows until you have decreased from 23 to 10 sts.</p>

95-167

Continue 10st across to complete 71 rows so the top of your front panel matches the 10" top of your back panel unless you have shortened to adapt your fit.

Fasten off leaving a long tail.



As noted on the back, as you adapt to fit you can shorten the upper sections and this will decrease the length of the armholes and neckline. As you measure to fit ensure you are also taking into account the width of your desired trim (eg. Thicker or thinner ribbing changes how

95-167
R

RIGHT SIDE FRONT

Attach yarn into the next available st (just beside the left side you just completed) with a simple knot.

Row 1: ch 1, LinSt 25 sts, ch 1, turn.

Row 2: LinSt each st until 2 remain, then decrease the last two stitches by LinSt2Tog together, ch 1, turn. [1]

$25-1=(24)$

Row 3: LinSt in each st across, ch 1, turn.

As you did for the left front, continue to repeat these last 2 rows until 10 sts remain....continue LinSt 10 across to reach 71 rows for top half of the right side to match the left.

Fasten off leaving a long tail.

ASSEMBLY

Lay the front panel directly on top of the back panel. Using your yarn needle and tail ends, seam across both shoulders connecting the two pieces together. For all the trim I used a whipstitch. Check the overall length / fit as you drape it over your shoulders. Then sew the sides together from below the armhole to the lower hem for this easiest version (solid colour body).

NECKBAND

As we did for the hems if you want the same width Ch 13 for the wider trim.

Options: As noted in the beginning if you want a pop of colour and / or desired finish you can change yarns and/ or also make a thinner trim Ch.9 = (8) or thinnest I'd recommend is Ch.6 =

(5).

Row 1: sc in 2nd ch from hook, sc in each ch across, ch 1, turn. (12).

Row 2: SCBL in each st across, ch 1, turn.(12)

Rep row 2 until the neckband is long enough to go around the neckline when slightly stretched. Important as if you don't slightly stretch the ribbing when measuring you will have made it too long. I found it easier to not tie off the end until I had attached all the trim pieces so I could make absolutely sure they were the correct length.

Fasten off leaving a long tail you will use to attach the piece.

Always attach your trim with the rights sides facing out. I find it easiest to lay the piece flat on a table to assemble. Sew your neckline trim to the neckline. I used a whipstitch.

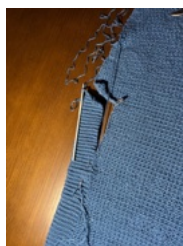
To create a "v" to finish off the neckline you now turn your sweater inside out.



Once you have sewn the neckband all the way around the neckline you will finish the "v" next by folding back both the beginning and end of the band on the inside of the sweater (forms triangles) and sew these two parts together so the final seam in the "V" is centered.

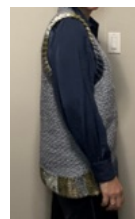
ARMHOLE

ARMHOLE TRIM. As noted at the beginning, for this version I decided to match the neckline to the wider hem trim ribbing for balance (ch.13...). You can easily adapt to make a thinner neckline / armhole trim (Ch.9 or 6) to suit your yarn / preference. Again, if you are nervous about the stretch / fit you can just not tie off your ribbing until you have attached the trim around the armhole to ensure a perfect fit. With the wider trim, do stretch as it can end up "floppy" if you make a longer than needed trim.





And check out our chunky yarn pattern version for this same vest!



LOWER SIDE PANEL OPTIONS / NOTES

If you don't need any additional width across your waist or hip the assembly instructions were to whip stitch the sides of your vest together from the bottom of the hem up to the armhole. But I wanted to be able to adapt this basic pattern for family and friends. I also wanted to try

running a Rey narrow / small band of colour down the side which was easily done without altering greatly the fit.

But if you want to adapt to increase the bottom half of your vest slightly for over the hips or waist, you can add in a side panel that will run from underneath the arm to the hem. However, please note if you need a lot of width (e.g. 3") adding a panel this will make the armholes above too large and you will have to make further alterations to your pattern (e.g. the pattern calls for slip stitch 13 to begin the armhole). I also found the colour blocking worked best when I went no wider than the trim size (eg neckline, armhole, etc.).

For a side panel you can, as I show below, keep the ribbing lengthwise so it matches the bottom / ribbing direction. To do so...

Ch.81

Row 1: single crochet (sc) in 2nd chain and then continue to sc in each chain across, ch 1 turn (80). Continue the ribbing until you create for example a 1/4" wide panel. I found a width that was bigger than the trim did not appeal as it looked then miss matched. A slim line also made an elegant pop of colour that could be picked up elsewhere.

Remember, if you adapted the length of the bottom half of the vest you may need to shorten or lengthen this panel...As shown below just double check your length as you begin your chain.



(#2 = wide example of armhole needing to be adapted)

Another side panel option that can be lovely if you want more options for colour blocking is to create ribbing that will square off at the hem. You continue the armhole trim with one or two strips of the same size armhole ribbing trim. You would create two pieces for each side (ch.9) and attach.



Don't forget to "block" your final piece to shape it.

Great gift ideas

Not to be reproduced or
distributed

Free pattern for home
crafters

*so
Grateful
for Your
Support!*